

Measure 3: Candidate competency at completion

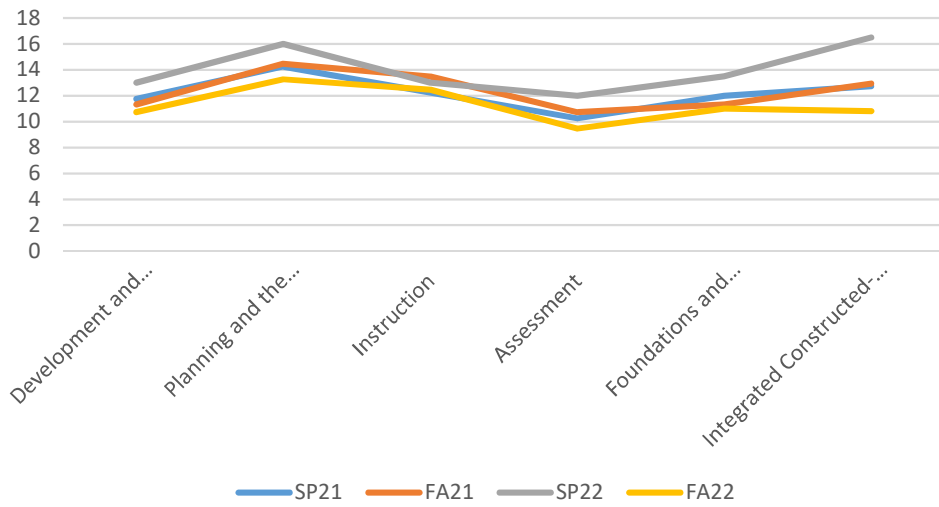
Note: Term below refers to the term in which a candidate completed their final clinical placement. Some terms are combined with another in order to account for low n in certain terms or to group terms in which completion requirements varied together.

Praxis II exams: Special Education

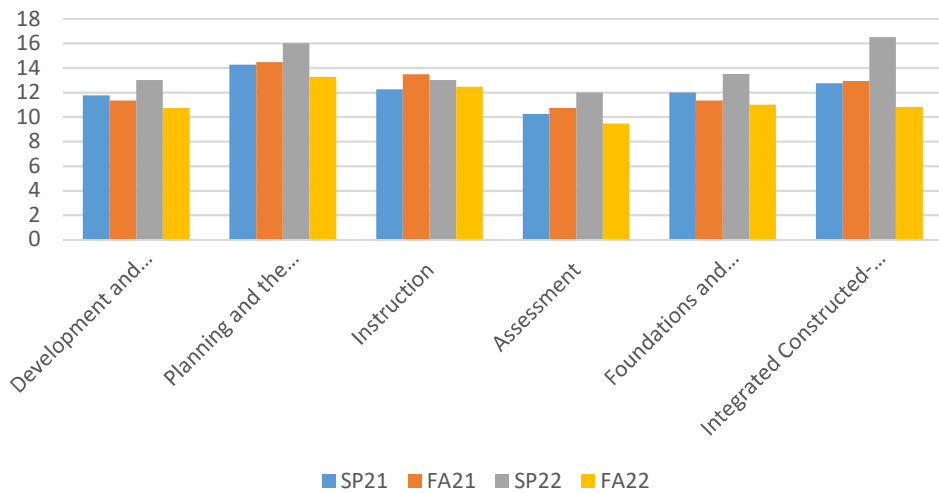
Term	n	Average overall score	Development and Characteristics of Learners	Standard dev	Planning and the Learning Environment	Standard dev	Instruction	Standard dev
SP21	4	172.25	11.75	1.09	14.25	0.43	12.25	2.78
FA21	15	173.87	11.33	2.21	14.47	1.31	13.47	2.65
SP22	2	185	13	0	16	0	13	2
FA22	26	166.88	10.73	2.41	13.27	2.25	12.46	2.85

Term	Assessment	Standard dev	Foundations and Professional Responsibilities	Standard dev	Integrated Constructed-Response Questions	Standard dev
SP21	10.25	1.92	12	1.41	12.75	2.68
FA21	10.73	2.41	11.33	1.92	12.93	3.09
SP22	12	0	13.5	0.5	16.5	0.5
FA22	9.46	2.31	11	2.67	10.81	3.1

SPEC Praxis (5543) over time



SPEC Praxis (5543) over time

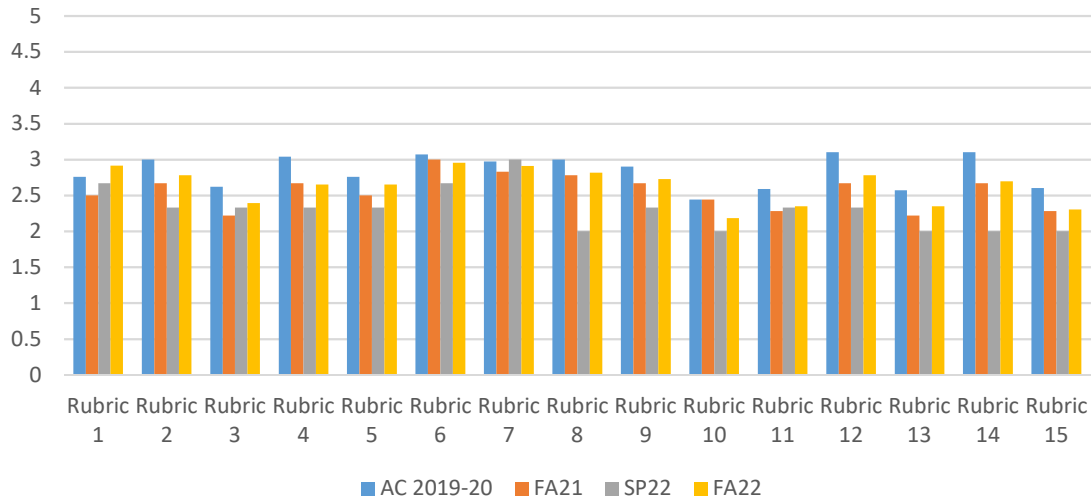


edTPA: Special Education

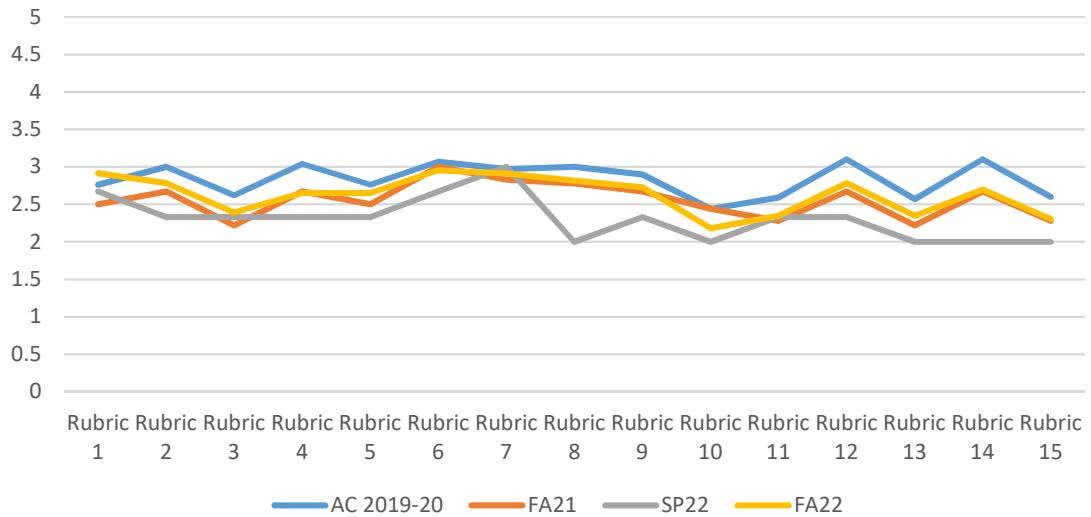
Term	n	Overall score	Standard dev (total score)	Rubric 1	Rubric 2	Rubric 3	Rubric 4	Rubric 5	Rubric 6	Rubric 7	Rubric 8	Rubric 9	Rubric 10
AY 2019-20	29	42.31	4.53	2.76	3	2.62	3.04	2.76	3.07	2.97	3	2.9	2.44
FA21	18	38.39	7.05	2.5	2.67	2.22	2.67	2.5	3	2.83	2.78	2.67	2.44
SP22	3	34.67	8.58	2.67	2.33	2.33	2.33	2.33	2.67	3	2	2.33	2
FA22	23	39.14	7.09	2.91	2.78	2.39	2.65	2.65	2.95	2.91	2.82	2.73	2.18

Term	n	Overall score	Standard dev (total score)	Rubric 11	Rubric 12	Rubric 13	Rubric 14	Rubric 15
AY 2019-20	29	42.31	4.53	2.59	3.1	2.57	3.1	2.6
FA21	18	38.39	7.05	2.28	2.67	2.22	2.67	2.28
SP22	3	34.67	8.58	2.33	2.33	2	2	2
FA22	23	39.14	7.09	2.35	2.78	2.35	2.7	2.3

SPEC edTPA over time



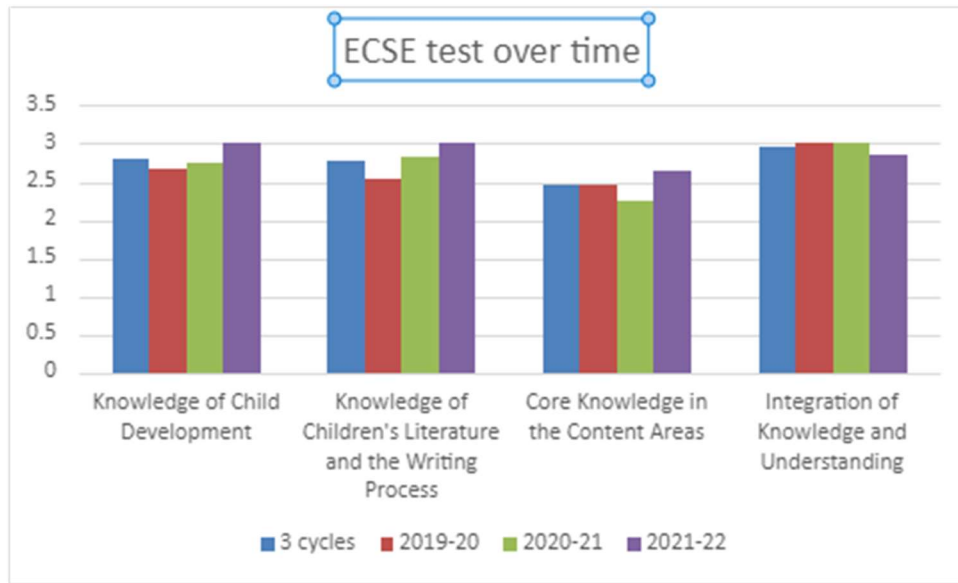
SPEC edTPA over time



Pearson 002 Early Childhood exam: Early Childhood/Elementary

Note: Both early Childhood and Elementary candidates are required to pass the Pearson 002 Early Childhood exam. The chart and table immediately below combined candidates from these two programs. However, Early Childhood and Elementary candidates complete distinct edTPA handbooks. Thus, the edTPA results following as separated by program.

Group	n	Overall score	Knowledge of Child Development	Standard dev	Knowledge of Children's Literature and the Writing Process	Standard dev	Core Knowledge in the Content Areas	Standard dev	Integration of Knowledge and Understanding	Standard dev
3 cycles	41	238.32	2.8	0.71	2.78	0.87	2.46	0.77	2.95	0.62
2019-20	15	234.8	2.67	0.79	2.53	0.96	2.46	0.96	3	0.63
2020-21	12	234.67	2.75	0.72	2.83	0.69	2.25	0.43	3	0.58
2021-22	14	245.21	3	0.53	3	0.85	2.64	0.72	2.86	0.64

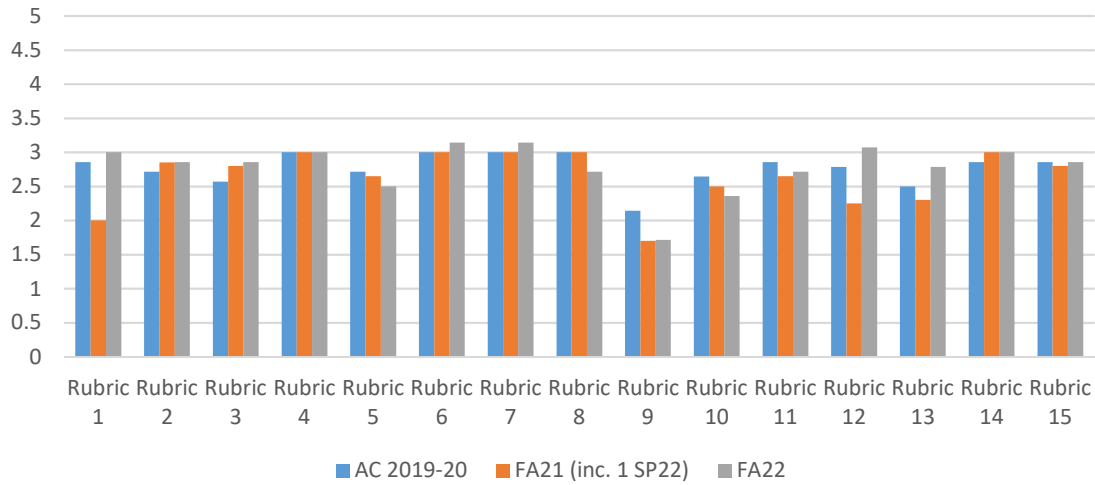


edTPA: Early Childhood

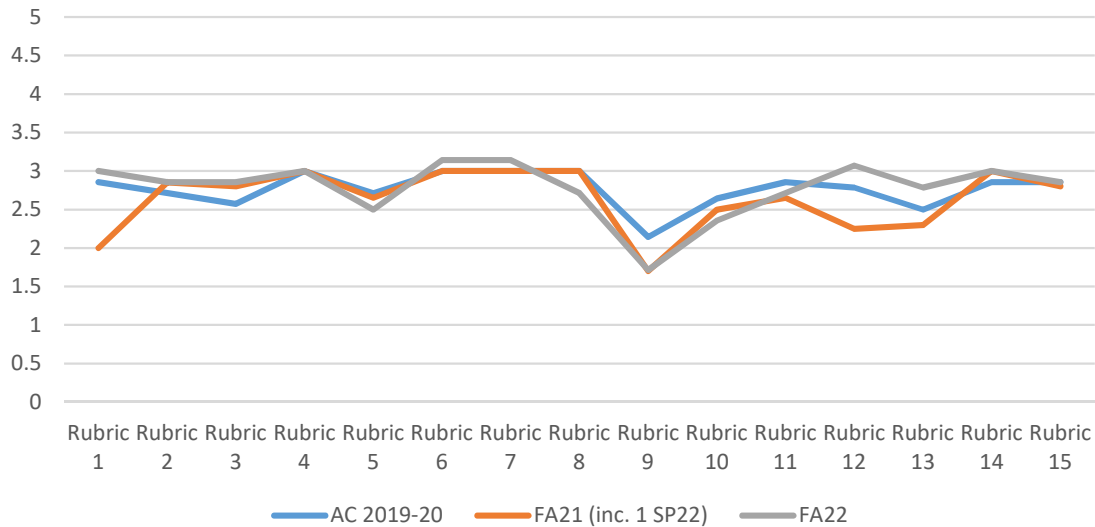
Term	n	Overall score	Standard dev (total score)	Rubric 1	Rubric 2	Rubric 3	Rubric 4	Rubric 5	Rubric 6	Rubric 7	Rubric 8	Rubric 9	Rubric 10
AY 2019-20	14	41.5	3.5	2.86	2.71	2.57	3	2.71	3	3	3	2.14	2.64
FA21 (inc. 1 SP22)	12	39.91	2.19	2	2.85	2.8	3	2.65	3	3	3	1.7	2.5
FA22	7	41.71	2.55	3	2.86	2.86	3	2.5	3.14	3.14	2.71	1.71	2.36

Term	n	Overall score	Rubric 11	Rubric 12	Rubric 13	Rubric 14	Rubric 15
AY 2019-20	14	41.5	2.86	2.79	2.5	2.86	2.86
FA21 (inc. 1 SP22)	12	39.91	2.65	2.25	2.3	3	2.8
FA22	7	41.71	2.71	3.07	2.79	3	2.86

Early Childhood edTPA over time



Early Childhood edTPA over time

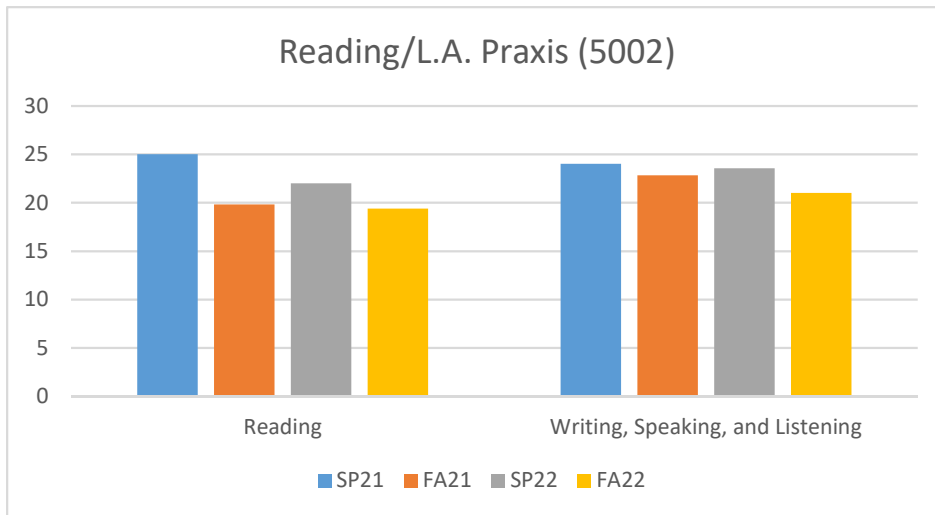


Praxis II exams: Elementary

Note: The Praxis II examinations for Elementary are split into four sub-tests (5002, 5003, 5004 and 5005). Candidates must achieve a passing score on each sub-test in order to receive an Initial license in Elementary education. Sub-test results are presented below.

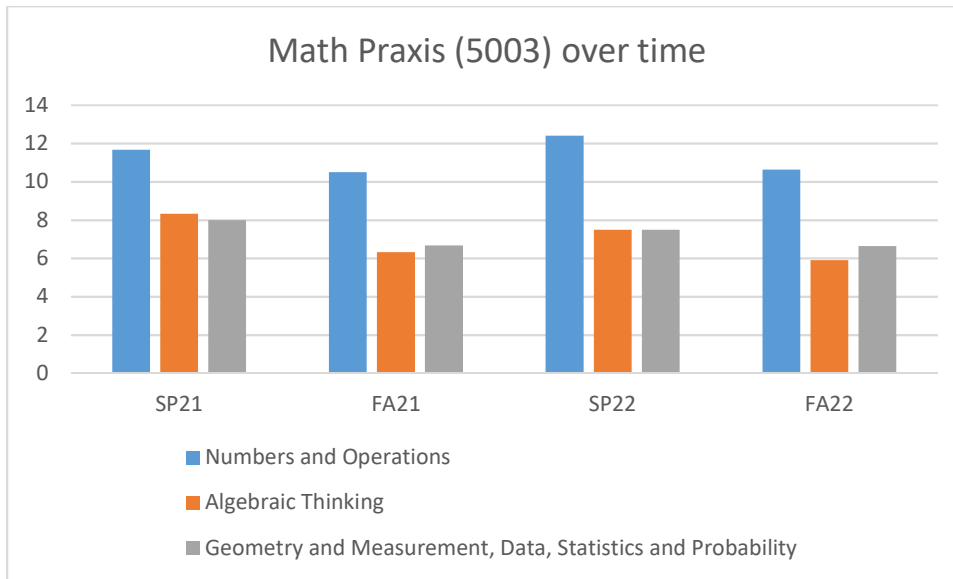
Reading and Language Arts (5002)

Term	n	Average overall score	Reading	Standard dev	Writing, Speaking, and Listening	Standard dev
SP21	3	175	25	0.82	24	2.16
FA21	11	162.45	19.82	3.54	22.82	3.64
SP22	11	168	22	4.55	23.55	4.27
FA22	13	157.85	19.38	3.93	21	3.51



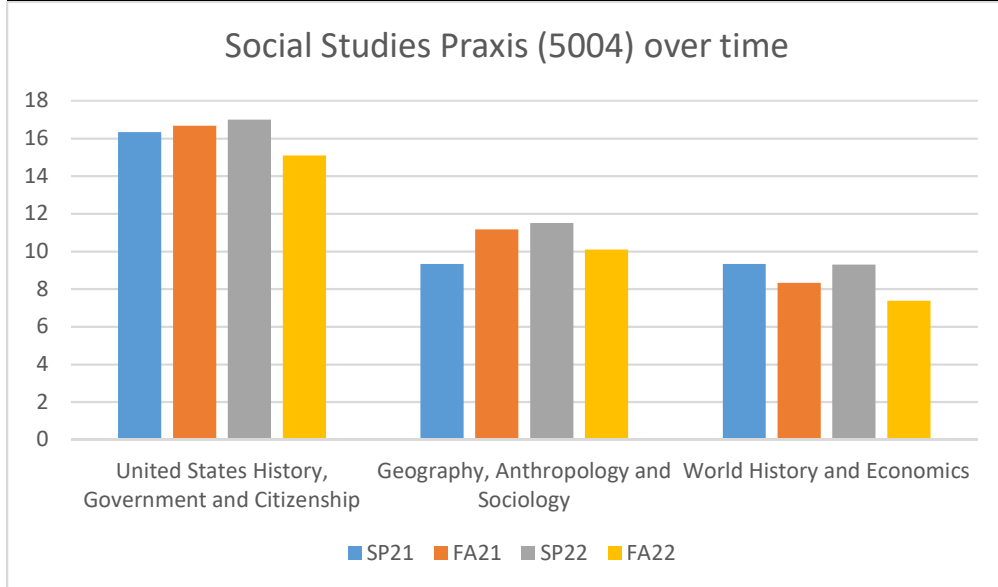
Mathematics (5003)

Term	n	Average overall score	Numbers and Operations	Standard dev	Algebraic Thinking	Standard dev	Geometry and Measurement, Data, Statistics and Probability	Standard dev
SP21	3	172	11.67	1.25	8.33	0.94	8	1.63
FA21	6	155.17	10.5	1.89	6.33	3.03	6.67	1.49
SP22	10	169.6	12.4	1.74	7.5	2.77	7.5	1.8
FA22	11	153.64	10.64	2.67	5.91	2.11	6.64	2.14



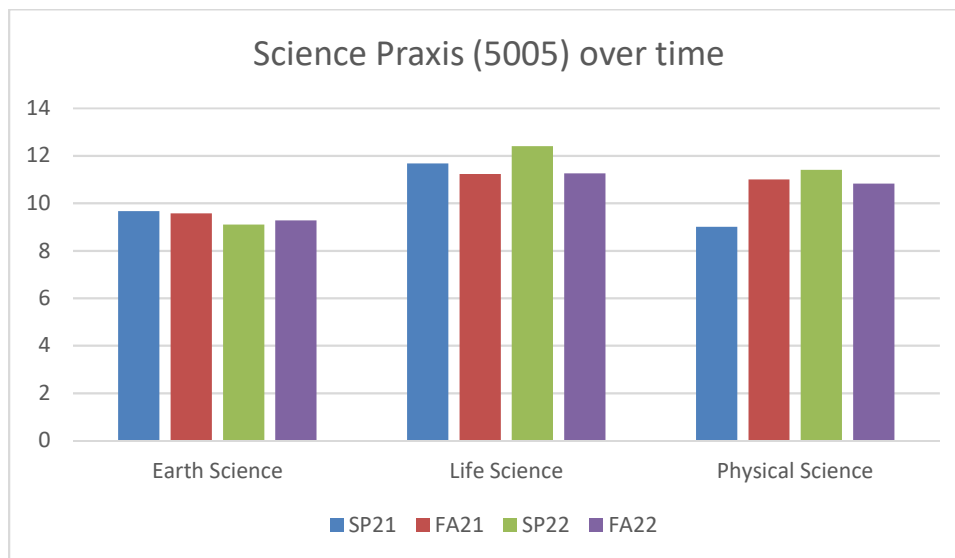
Social Studies (5004)

Term	n	Average overall score	United States History, Government and Citizenship	Standard dev	Geography, Anthropology and Sociology	Standard dev	World History and Economics	Standard dev
SP21	3	160.33	16.33	0.94	9.33	2.87	9.33	0.94
FA21	6	164.33	16.67	2.05	11.17	3.02	8.33	2.54
SP22	10	168	17	4.07	11.5	2.69	9.3	2.45
FA22	11	155.27	15.1	3.48	10.1	3.26	7.37	2.23



Science (5005)

Term	n	Average overall score	Earth Science	Standard dev	Life Science	Standard dev	Physical Science	Standard dev
SP21	3	155	9.67	1.24	11.67	1.89	9	4.08
FA21	7	158.71	9.57	1.59	11.23	2.86	11	2.07
SP22	10	161.3	9.1	2.34	12.4	2.97	11.4	2.87
FA22	11	157.18	9.28	2.65	11.26	3.08	10.82	3.38

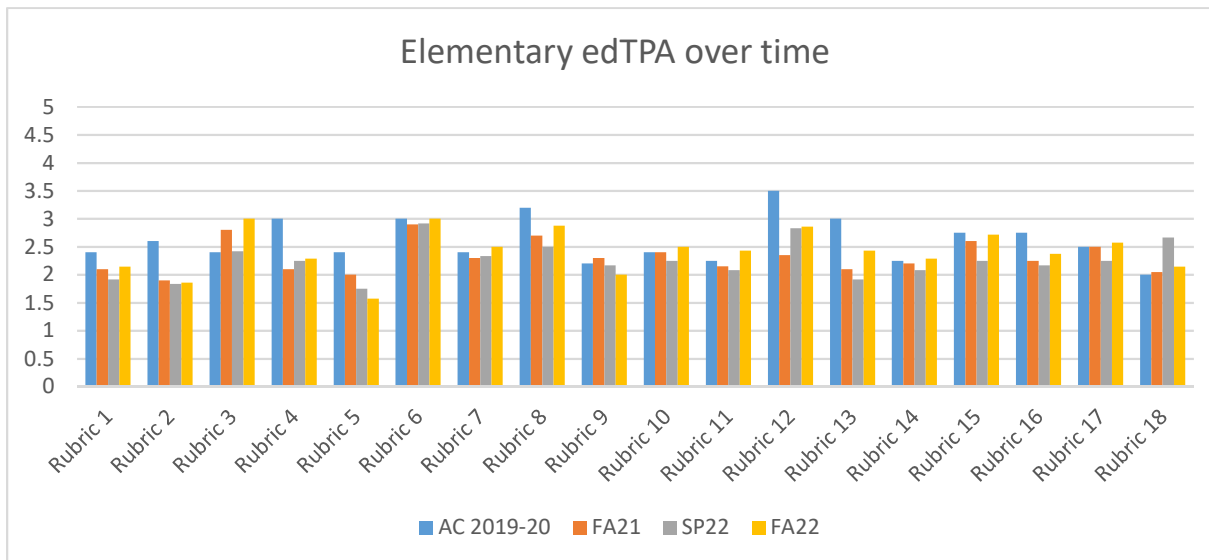
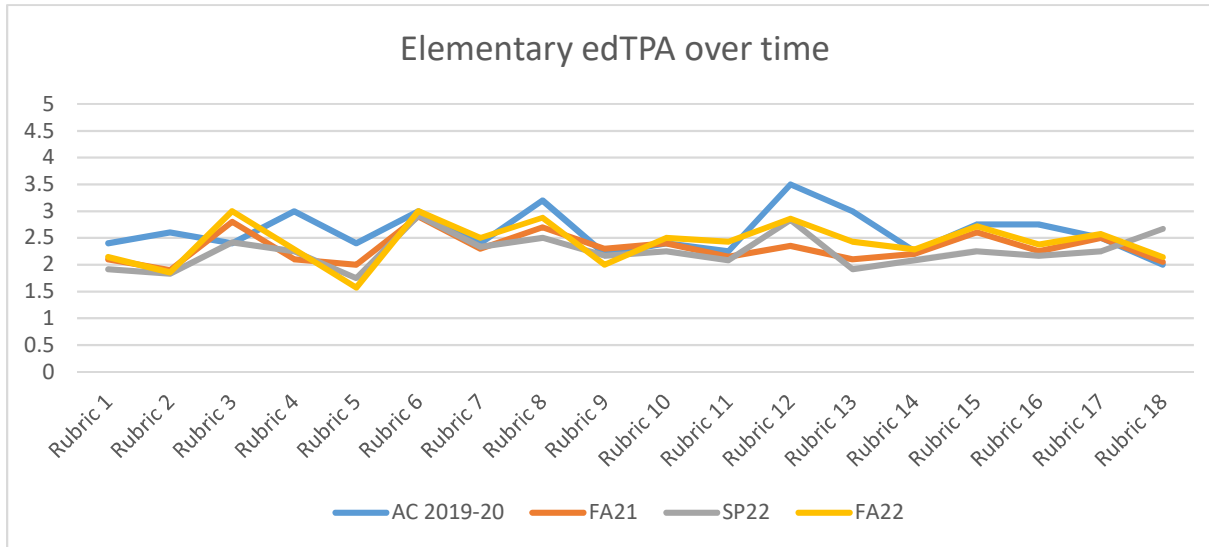


edTPA: Elementary

Term	n	Overall score	Standard dev (total score)	Rubric 1	Rubric 2	Rubric 3	Rubric 4	Rubric 5	Rubric 6	Rubric 7	Rubric 8	Rubric 9	Rubric 10
AY 2019-20	5	47.75	5.36	2.4	2.6	2.4	3	2.4	3	2.4	3.2	2.2	2.4
FA21	10	41.7	6.23	2.1	1.9	2.8	2.1	2	2.9	2.3	2.7	2.3	2.4
SP22	12	40.08	7.03	1.92	1.8	2.42	2.25	1.75	2.92	2.33	2.5	2.17	2.25
FA22	8	43.86	4.39	2.14	1.86	3	2.29	1.57	3	2.5	2.88	2	2.5

Term	n	Overall score	Rubric 11	Rubric 12	Rubric 13	Rubric 14	Rubric 15	Rubric 16	Rubric 17	Rubric 18
AY 2019-20	5	47.75	2.25	3.5	3	2.25	2.75	2.75	2.5	2
FA21	10	41.7	2.15	2.35	2.1	2.2	2.6	2.25	2.5	2.05
SP22	12	40.08	2.08	2.83	1.92	2.08	2.25	2.17	2.25	2.67
FA22	8	43.86	2.43	2.86	2.43	2.29	2.71	2.38	2.57	2.14

Elementary edTPA:

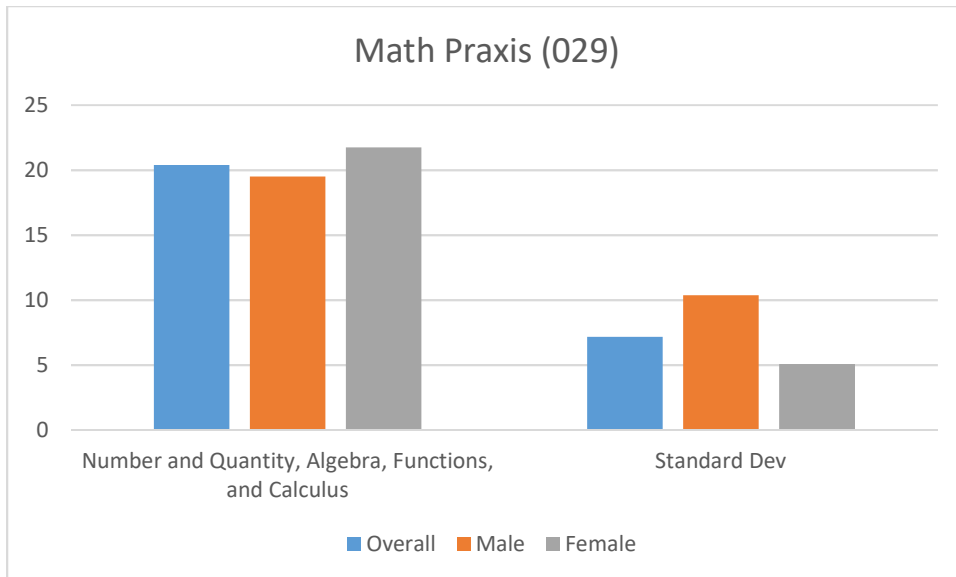


Praxis II exams: Secondary subjects

Note: Each licensure area

Mathematics (029)

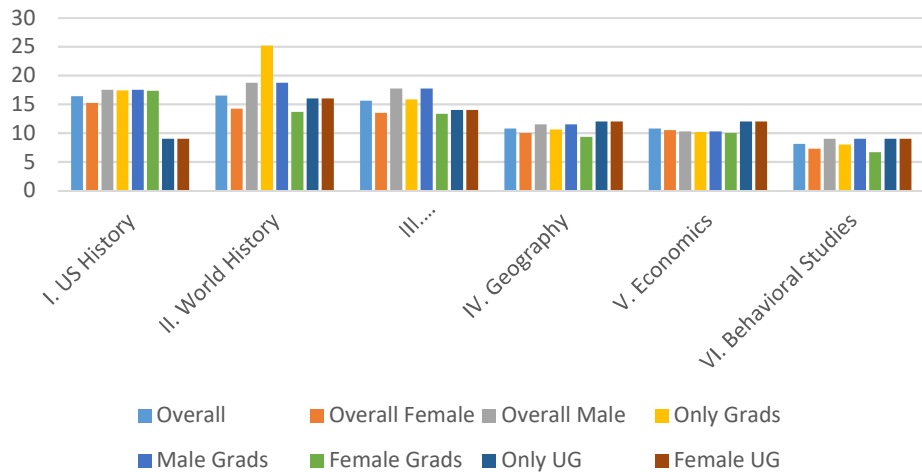
Group	n	Overall Score	% Passing	Lowest Score	Highest Score	Number and Quantity, Algebra, Functions, and Calculus	Standard Dev	Geometry, Probability, and Statistics, Discrete Mathematics.	Standard dev
Overall	10	155.7	50	113	187	20.4	7.18	9.7	3.06
Male	4	161.75	75	113	187	19.5	10.37	8.83	4.24
Female	6	151.67	33	132	171	21.75	5.09	11	1.94



History/Social Studies (026)

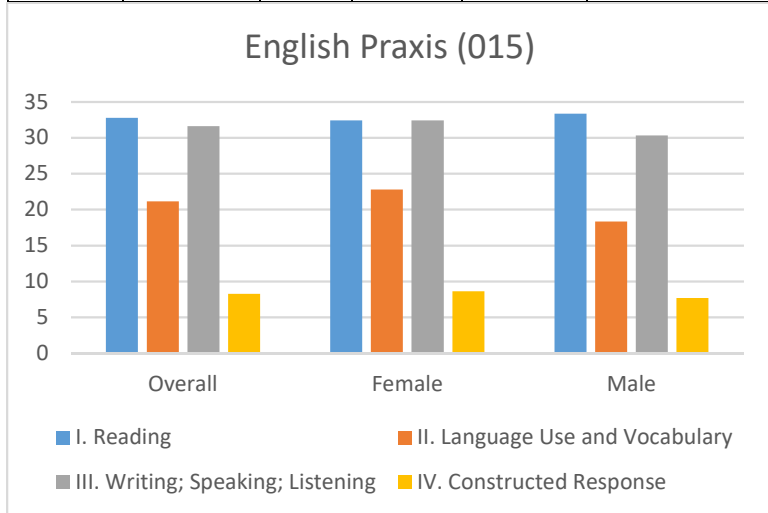
Group	n	Passing	Average score	I. US History	II. World History	III. Government, Civics and Political Science	IV. Geography	V. Economics	VI. Behavioral Studies
All	8	100%	172.13	16.375	16.5	15.625	10.75	10.75	8.125
Female	4	100%	164.75	15.25	14.25	13.5	10	10.5	7.25
Male	4	100%	179.5	17.5	18.75	17.75	11.5	10.25	9
Grad	7	100%	135.33	17.4	25.2	15.86	10.6	10.14	8
Male	4	100%	179.5	17.5	18.75	17.75	11.5	10.25	9
Female	3	100%	164	17.33	13.67	13.33	9.33	10	6.67
UG	1	100%	167	9	16	14	12	12	9
Female	1	100%	167	9	16	14	12	12	9

History/Social Studies Praxis (026)



English (015)

Praxis II 5039							
Group	Percent passing	n	Mean score	I. Reading	II. Language Use and Vocabulary	III. Writing; Speaking; Listening	IV. Constructed Response
Overall	87.50%	8	176.38	32.75	21.13	31.63	8.25
Female	100%	5	177.4	32.4	22.8	32.4	8.6
Male	66.67%	3	174.67	33.33	18.33	30.33	7.67
Undergrad							
Overall	75%	4	172	33.25	18.75	29	7.5
Female	100%	3	173.67	33.33	20.33	28	7.67
Male	0%	1	167	33	14	32	7
Grad							
Overall	100%	4	180.75	32.25	23.5	34.25	9
Female	100%	2	183	32.5	25.5	36	9
Male	100%	2	178.5	32	21.5	32.5	9



edTPA: Secondary subjects (combined)

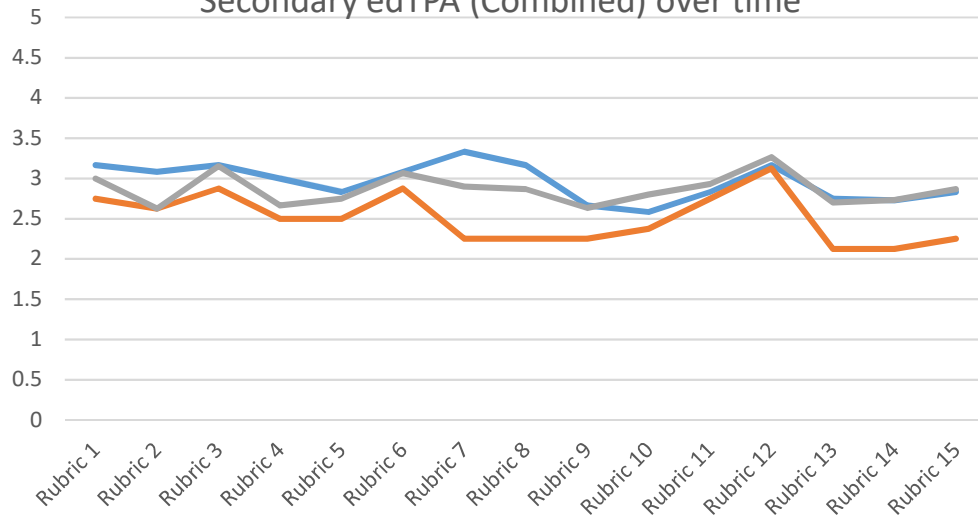
Secondary (All subjects combined)

Note: Given the small n of each secondary licensure program, edTPA results for all secondary candidates are aggregated for purposes of analyzing edTPA results.

Term	n	Overall score	Standard dev (total score)	Rubric 1	Rubric 2	Rubric 3	Rubric 4	Rubric 5	Rubric 6	Rubric 7	Rubric 8	Rubric 9	Rubric 10
AY 2019-20	12	43.92	4.87	3.17	3.08	3.17	3	2.83	3.0	3.33	3.17	2.67	2.58
FA21	8	37.63	5.21	2.75	2.63	2.88	2.5	2.5	2.88	2.25	2.25	2.25	2.38
FA22	16	43.2	2.99	3	2.63	3.16	2.6	2.75	3.07	2.9	2.87	2.63	2.8

Term	n	Overall score	Rubric 11	Rubric 12	Rubric 13	Rubric 14	Rubric 15
AY 2019-20	12	43.92	2.83	3.17	2.75	2.73	2.83
FA21	8	37.63	2.75	3.125	2.13	2.13	2.25
FA22	16	43.2	2.93	3.27	2.7	2.73	2.87

Secondary edTPA (Combined) over time



Secondary edTPA (Combined) over time

